

SURFACE PROFILES: PRAP-U

CHARACTERISTICS

Aluminium profile for surface installation. It houses both IP20 and IP68 strips up to 18 mm in width. Equipped with a compartment to accommodate cables.

CAN BE USED WITH LED STRIPS WITH A MAXIMUM WIDTH:

18 mm.

MATERIALS

6063 Aluminium profile with a white PC screen.

ACCESSORIES INCLUDED

Every 2 metre bar is complete with 1 set of end caps (with and without holes) and 1 set of mounting clips.

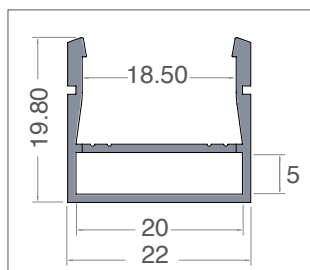
MOUNTING

Surface. Equipped with a compartment to pass cables through.

PACKAGE

Supplied in packages of 5 bars, each one measuring 2 meters, complete with screen and accessories. Replacement accessories available with a separate code.

Screens with different beam openings, spot, flood and asymmetrical available to replace the standard screen the profile is equipped with.



The universal profile has a compartment to pass cables through.





Cutting Universal and Essential profiles to size*:

fixed cost of piece work

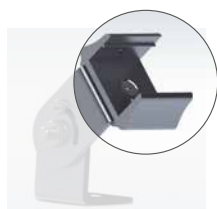
VA03

* Includes mounting accessories.

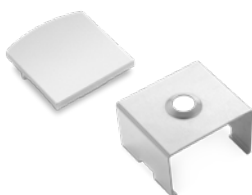
Art.	Description	L1	H	L	 8011905	
PRAP-U	profile complete with PC screen and accessories	22	19,8	2000	933036	1/5



Art.	Description	 8011905	
OR-DEV	Set of Steel Supports For Profiles	844004	1



Art.	Description	 8011905	
KTORDEV-U	Set of Aluminium Mounting Heads For PRAP-U Profiles.	931728	1



art	Descrizione	 8011905	
KTPRAP-UEC	5 + 5 silver colour end caps	913748	1
KTPRU-CL	5 sets of clips for PRAP-U + PRIN-U	933111	1